



Acme Sanitary Ware Co Ltd


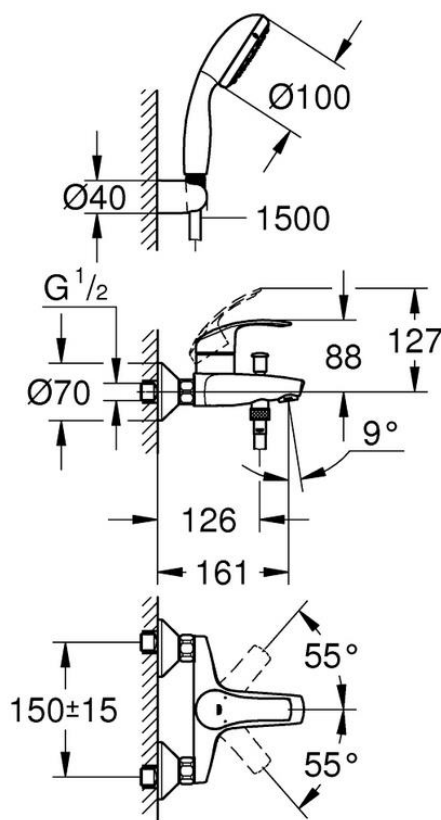

Acme Building, 22-28 Nanking Street, Kowloon, Hong Kong
 Tel: 2388 7171 Fax: 2710 8012
 E-mail: acme@acmesanitary.com.hk
 Website: www.acmesanitaryware.com.hk



Pure Freude
an Wasser

PROJECT		REF		REV	ITEM CODE	
LOCATION		DATE			PAGE	

SANITARY WARE SPECIFICATION SHEET

Item Descriptions	GROHE (Germany) "Eurosmart" Single-lever bath & shower mixer with shower set	Illustration/ Drawing
Dimensions	Refer to drawing	 
Model	3330220A	
Finish / Material	Chrome Plated	
Country of origin	Germany	
Manufacturer	GROHE Limited	
Supplier	Acme Sanitary Ware Co. Ltd Mr. Eric Wong/ Mr. Don Yuen	
Contact Tel/Fax	(852) 2388-7171 / (852) 2710-8012	
E-mail	acme@acmesanitary.com.hk	
Website	www.acmesanitary.com.hk	
<p>"Eurosmart" <u>Single-lever bath/shower mixer 1/2 "</u></p> <ul style="list-style-type: none">• wall mounted• metal lever• GROHE SilkMove 35 mm ceramic cartridge• with temperature limiter• GROHE StarLight chrome finish• adjustable flow rate limiter• automatic diverter: bath/shower• mousseur• integrated non-return valve in the shower outlet 1/2"• S-unions• metal wall escutcheons• protected against backflow• with shower set• Consisting of:<ul style="list-style-type: none">hand shower Tempesta 100, 1 spray, 9.5 l/min (27 923)wall shower holder (28 605)Relaxaflex hose 1500 mm 1/2" x 1/2" (28 151)		



Note:

* All information of the above is for the reference only. No prior notice is made if any changes.



Acme Sanitary Ware Co Ltd

Acme Building, 22-28 Nanking Street, Kowloon, Hong Kong
 Tel: 2388 7171 Fax: 2710 8012
 E-mail: acme@acmesanitary.com.hk
 Website: www.acmesanitaryware.com.hk



Pure Freude
an Wasser

PROJECT		REF		REV	ITEM CODE	
LOCATION		DATE			PAGE	

SANITARY WARE SPECIFICATION SHEET

GROHE EUROSMART

GROHE'S NUMBER 1 IN PREMIUM PERFORMANCE

For almost 2 decades, its legendary quality has made the GROHE's Eurosmart range the obvious choice for planners, architects and plumbers. Making it the number 1 worldwide with over 30 million sold. With its wide range of designs and functionalities, its long-lasting GROHE SilkMove Technology and German engineering know-how, Eurosmart is valued for every kind of project – bath, kitchen, commercial, large-scale or small. Eurosmart: always a first class choice since 1999.



27923000

"Tempesta 100"

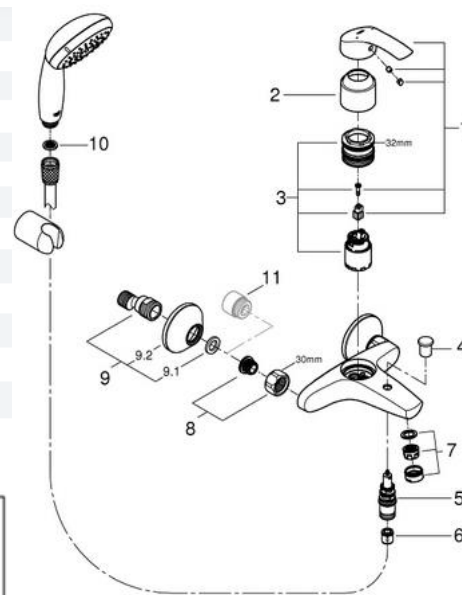
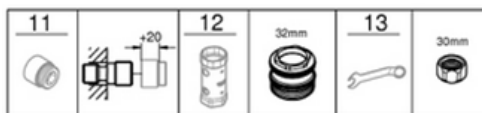
Hand shower 1 spray

- Rain
- **GROHE EcoJoy** 9.5 l/min flow limiter
- **GROHE DreamSpray** perfect spray pattern
- **GROHE StarLight** chrome finish
- **SpeedClean** anti-limescale system
- **Inner WaterGuide** for a longer life
- ShockProof silicone ring prevents damage caused by a shower falling
- Universal Mounting System. Fits all standard shower hoses



Pos.-nr.	Prod. description	Order-nr.
1	Lever	46898000
2	Cap	46899000
3	Cartridge	46374000
4	Diverter knob	65648000
5	Diverter	65655000
6	Non-return valve	08565000
7	Mousseur	13952000
8	Screw connection 1/2"	45044000
9	S-union	12075000
10	Dirt strainer	0700200M
11	Extension 3/4", 20 mm	0713000M*
12	Socket spanner	19332000*
13	Special spanner	19377000*

* Optional accessories



GROHE SilkMove cartridge technology for smooth handling

This premium tap comes with a continuously variable water temperature and volume adjustment technology, ensuring effortless lever operation even after years of use.



Easy to clean thanks to the GROHE StarLight chrome coating

Just wipe the tap down with a dry cloth – the ultra smooth surface finish is scratch resistant and ensures a lasting luminous sheen. You'll save plenty of time cleaning while your tap always looks shiny and new.



GROHE EcoJoy with water-saving function for reduced consumption

GROHE EcoJoy reduces water consumption by up to 50% without compromising on performance. Whenever you turn on your tap, you will enjoy a full jet of water while saving money nonetheless.



GROHE DreamSpray for luxurious showering

The GROHE DreamSpray technology turns your daily shower into a luxuriously relaxing experience. The advanced engineering of the shower head ensures a balanced flow of water from all nozzles, whatever spray pattern you choose.



SpeedClean: easy cleaning thanks to silicone nozzle

Indeed, the name says it all: with the SpeedClean technology, you'll have limescale removed from the spout in the blink of an eye thanks to a nozzle made of silicone. A quick wipe with your fingers is all it takes to remove any limescale deposits, saving you a lot of time and effort!



Coating protected by Inner WaterGuide

A strong insulation of the water guide inside the shower prevents its surface from heating up, so it will never be too hot for you to touch. At the same time, this serves to protect the finish of your GROHE shower, further enhancing its great durability.

* All information of the above is for the reference only. No prior notice is made if any changes.